



**TRIBAL YOUTH  
RESOURCE CENTER**

[www.TribalYouth.org](http://www.TribalYouth.org)

# Protecting Our Most Vulnerable – Unsheltered and Runaway Youth

*The 2<sup>nd</sup> of a 4-part Online Learning Event Series*

*This project was supported by Grant 15PJDP-21-GK-04048-MUMU awarded by the Office of Juvenile Justice and Delinquency Prevention, Office of Justice Programs, U.S. Department of Justice. The opinions, findings, and conclusions or recommendations expressed in this publication/program/exhibition are those of the author(s) and do not necessarily reflect those of the Department of Justice.*



# WELCOME & INTRODUCTIONS



**Moderator: Jeri Brunoe**  
Consultant  
Tribal Youth Resource Center



**Presenter: Ethleen Iron Cloud-  
Two Dogs**  
Training & Technical Assistance  
Manager  
Tribal Youth Resource Center



**Presenter: Deborah Tobacco**  
Training & Technical Assistance  
Staff Tribal Youth Resource  
Center



# Opening in a Good Way

August 11, 2023



**Tribal Youth Resource Center**  
[www.TribalYouth.org](http://www.TribalYouth.org)

## PRESENTER



**Frankee White Dress**  
**Oglala Sioux Tribe (OST)**  
**Director**  
**Emergency Youth Shelter**

A retired educator teacher /administrator of over 48 years, Frankee was asked by the OST Administration to work specifically with the Emergency Youth Shelter after her retirement. The most significant accomplishment in her many years of services is her ability to naturally connect and work with children.

*“Children experience life hardships and challenges through no fault of their own. Their resilience inspires us to do more and do better.”*

## PRESENTER



**Alejandra Gomez**  
**First Nations Ojibwe-Cree &**  
**Chicana**

Drawing from her personal experiences as a former foster youth and someone who experienced youth homelessness, Alejandra's activism addresses the complex issues of youth homelessness, mental health, and the child welfare system at both the statewide and national levels. Her passion for Indigenous solidarity took her Internationally to Nicaragua in 2022, collaborating with manos que transforman vidas to provide meals in the Chureca's wastelands.

She sees herself as a vessel, using her life experiences and wisdom to combat the generational trauma caused by erasure, genocide, colonization. She strives to promote equity, empower youth, amplify their voices, and fight for their rights.

Alejandra believes that by awakening their inner resilience and sharing their stories, current and future BIPOC + LGBTQ+ youth and young leaders can inspire others to do the same.

## PRESENTER



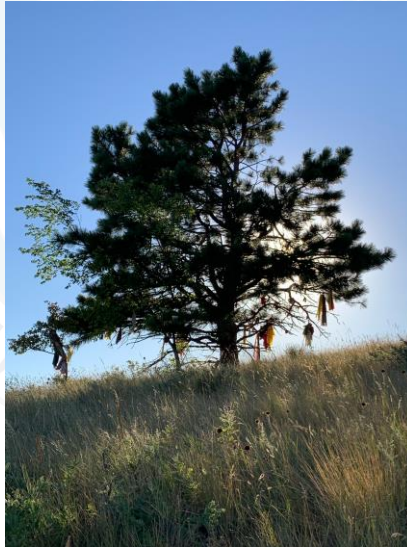
**Sheri Riemers**  
**Nindaanisequay-White Earth**  
**Nation**  
**Executive Director**  
**Ain Dah Yung Center**

Sheri has over 34 years of experience in program development, management and community outreach involving social services and culture revitalization in community-based services creating innovative, nationally-recognized models within the American Indian community.

She is a dedicated member of numerous boards and advisories that advocate and foster change to positively impact American Indian youth and families affected by historical trauma. Her years of dedication, visionary leadership, executive oversight, and experience allow her to navigate complex systems and advocate system change that impact our community today.

# ▶ UNSHELTERED & RUNAWAY YOUTH

This online learning event is focused on the root causes and solutions related to unsheltered and runaway Native youth across the country.



# ▶ OVERVIEW OF OLE #1



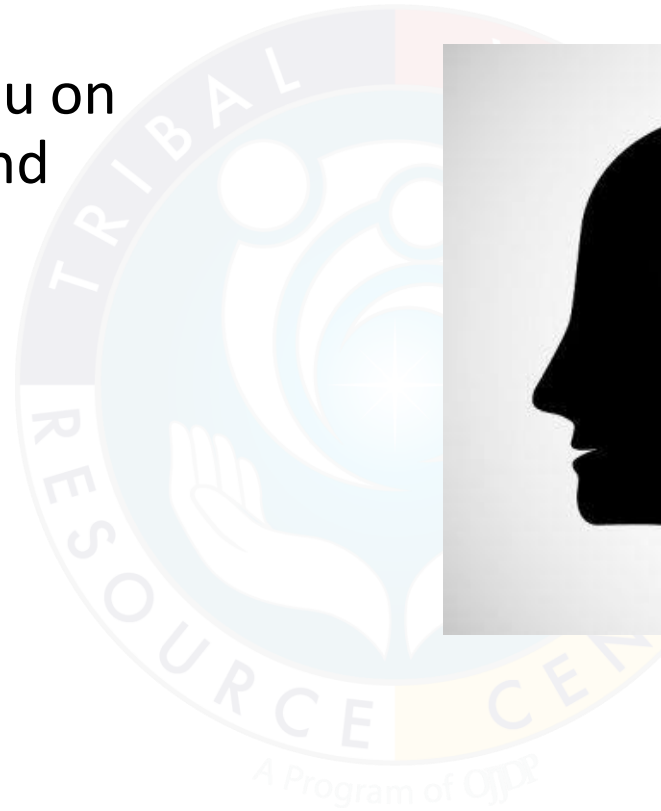
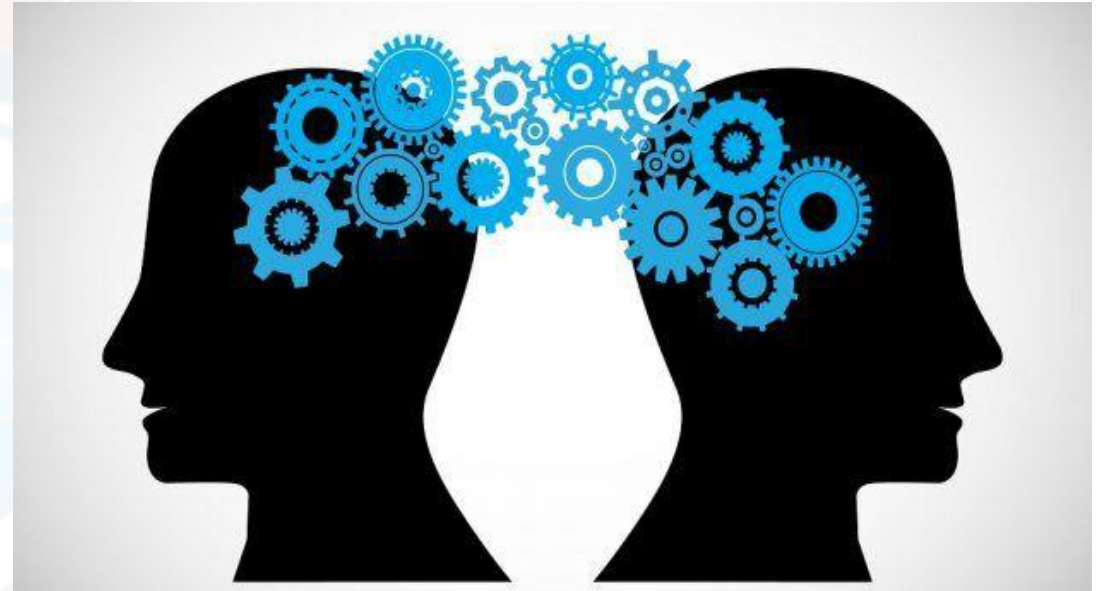


# ▶ LEARNING OBJECTIVES OLE #2

- Increase knowledge of prevention and intervention strategies being implemented in Native Youth Shelters that are proving to be successful in working with unsheltered and runaway Native youth.
- Increased understanding of the inherent needs and resilience of Native youth.
- Increased knowledge of strategies to successfully engage community, tribal leadership, funders, and/or partners to develop services for unsheltered and runaway youth.
- Increased knowledge of data collection strategies and resources to support OLE participants that are seeking to expand their services to unsheltered and runaway Native youth.
- Provide a peer learning forum for TY and JHWC grantees to discuss the needs of this specific Native youth population.

# ▶ PARTICIPANT POLL #1

How *knowledgeable* are you on the issues of unsheltered and runaway youth in your community?



# ▶ PREVALENCE OF NATIVE YOUTH HOMELESSNESS

In 2019, a national research study entitled, “Prevalence of Homeless Among American Indian and Alaska Native Youth,” with 25,492 responders revealed:

- The highest prevalence of homelessness among adolescents and young adults ages 13-25.
- During a 12-month span...
  - Approximately **10.2% of AI/AN households** with 13-17 year olds reported youth homelessness or runaway experiences that lasted at least one night.
  - Approximately **12.2% of AI/AN households** with 18-25 year olds reported youth homelessness or runaway experiences that lasted at least one night.
- Prevalence of reported youth homelessness/runaway experiences among AI/ AN young adults was **three times** that of their white non-Hispanic peers.

# KNOWLEDGE KEEPERS



# GROUP SHARING



# ▶ IMPORTANCE OF DATA COLLECTION



Effective data collection in Indian Country is an essential need and is critically important. Policymakers at the federal, tribal and state level depend on data to develop policy that effectively meets the needs of Native people.

## ▶ THE CONNECTION

Data Collection is the process of documented information from various sources and organizing in into a data set

A data set is created from various sources such as surveys, assessments, notes, demographics, etc., and are useful for the purpose of visualization, validating research and most commonly for statistical analysis and reports that inform decision making.



**A VISUAL OF HOW THEY WORK TOGETHER. A DATA SET LOOKS LIKE ONE OR MORE DATABASE TABLES, WHERE EVERY COLUMN OF A TABLE REPRESENTS A PARTICULAR VARIABLE AND EACH ROW CORRESPONDS TO A GIVEN RECORD OF THE DATA SET IN COLLECTION.**

**Local Level Data:** Work with the Planning Team to identify local level data. Data collection will support program goals, activities, quality improvement, and future sustainability planning. A TYRC Training and Technical Assistance Specialist can virtually facilitate resource mapping with the Planning Team, which may assist you with identifying key points for which data can be collected.

**Key Questions:**

- What methods will you use to collect the data?
- How often will the data be collected?
- Who will assist the Planning Team coordinator in collecting the data?
- How will you organize, manage, and store the data? Will your program have access to a database, or will you track data in a spreadsheet?

<b>Data To Collect</b>	<b>Where is the data and how will it be collected?</b>	<b>Who is responsible for collecting the data?</b>	<b>Target Date(s) for Data Collection and review</b>	<b>Why would we collect this data?</b>
<i>Example: Identifying the number of unsheltered youth in the community</i>	<i>Example: Schools and Social Services can share information through a MOU</i>	<i>Example: Planning Team coordinator will work with local schools and social services to collect agreed upon data</i>	<i>Example: Monthly review</i>	<i>Example: Ensure that every youth in the community has a safe and nurturing living environment.</i>



# PREVENTION



According to RHY Clearing House, researchers are finding that running away significantly increases young people's risk of commercial sexual exploitation as well as labor trafficking. Therefore, reducing runaway incidents is crucial to prevent young people from becoming homeless and falling into trafficking situations.

<https://rhyclearinghouse.acf.hhs.gov/blog/2020/07/overlap-human-trafficking-and-runaway-and-homeless-youth>



**Culture as a Protective Factor in Preventing Human Trafficking in Native Youth:** <https://htcbc.ovc.ojp.gov/library/publications/culture-protective-factor-preventing-trafficking-among-native-youth-tribal>

# RESOURCES

- ❖ Martin, L. P.-G. (2020), "Prevalence of trading Sex Among High School Students in Minnesota: Demographics, Relevant Adverse Experiences, and Health-Related Statistics," *Journal of Adolescent Health*, 1011-1013, <https://pubmed.ncbi.nlm.nih.gov/33032931/>.
- ❖ Morton, M. H., Chavez, R., & Moore, K. (2019), "Prevalence and Correlates of Homelessness Among American Indian and Alaska Native Youth," *The Journal of Primary Prevention*, 1-2, <https://pubmed.ncbi.nlm.nih.gov/31691062/>.
- ❖ [Student Homelessness: Lessons from the Youth Risk Behavior Survey \(YRBS\) - SchoolHouse Connection](#)
- ❖ <https://www.1800runaway.org/teachable-tuesday-voy>
- ❖ [Home - National Network for Youth \(nn4youth.org\)](#)
- ❖ [Combating Trafficking Native Youth Toolkit on Human Trafficking \(hhs.gov\)](#)



# CLOSING IN A GOOD WAY



**TRIBAL YOUTH  
RESOURCE CENTER**

[www.TribalYouth.org](http://www.TribalYouth.org)

