



Who are the Youth that We Plan to Serve?



Tribal Youth Resource Center
www.TribalYouth.org

▶ BEFORE WE GET STARTED...

- *This project was supported by Grant #15PJDP-21-GK-04048-MUMU awarded by the Office of Juvenile Justice and Delinquency Prevention, Office of Justice Programs, U.S. Department of Justice.*
- *The opinions, findings, and conclusions or recommendations expressed in this publication/program/exhibition are those of the author(s) and do not necessarily reflect those of the Department of Justice.*

▶ LEARNING OBJECTIVES

- Introduce the System of Care model and facilitate discussion of tribal traditional beliefs, values and care of children and youth.
- Identify JHW Courts and Program Continuum of Care Approaches (Program and Individual) for Strategic Planning

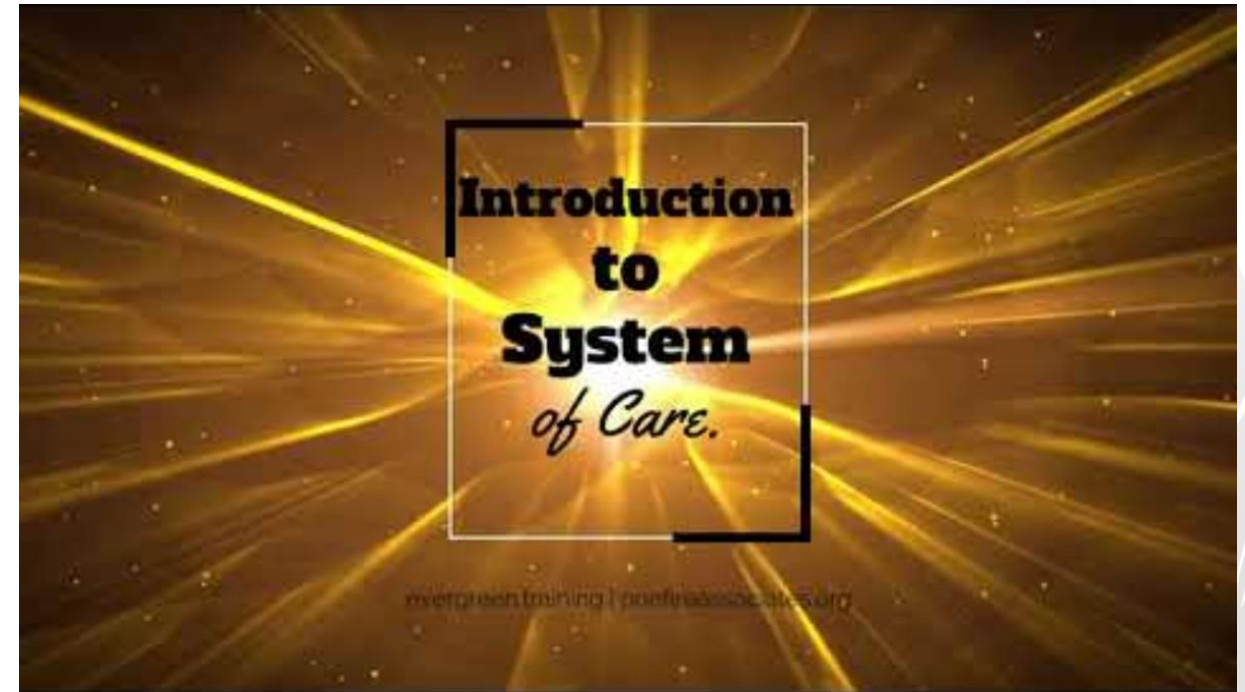
► SOCIETY OF CARE



System of Care Framework

System of Care Framework (from Stroul, B. & Friedman, R. (1986 rev ed)

Graphics By Nick Birdshead

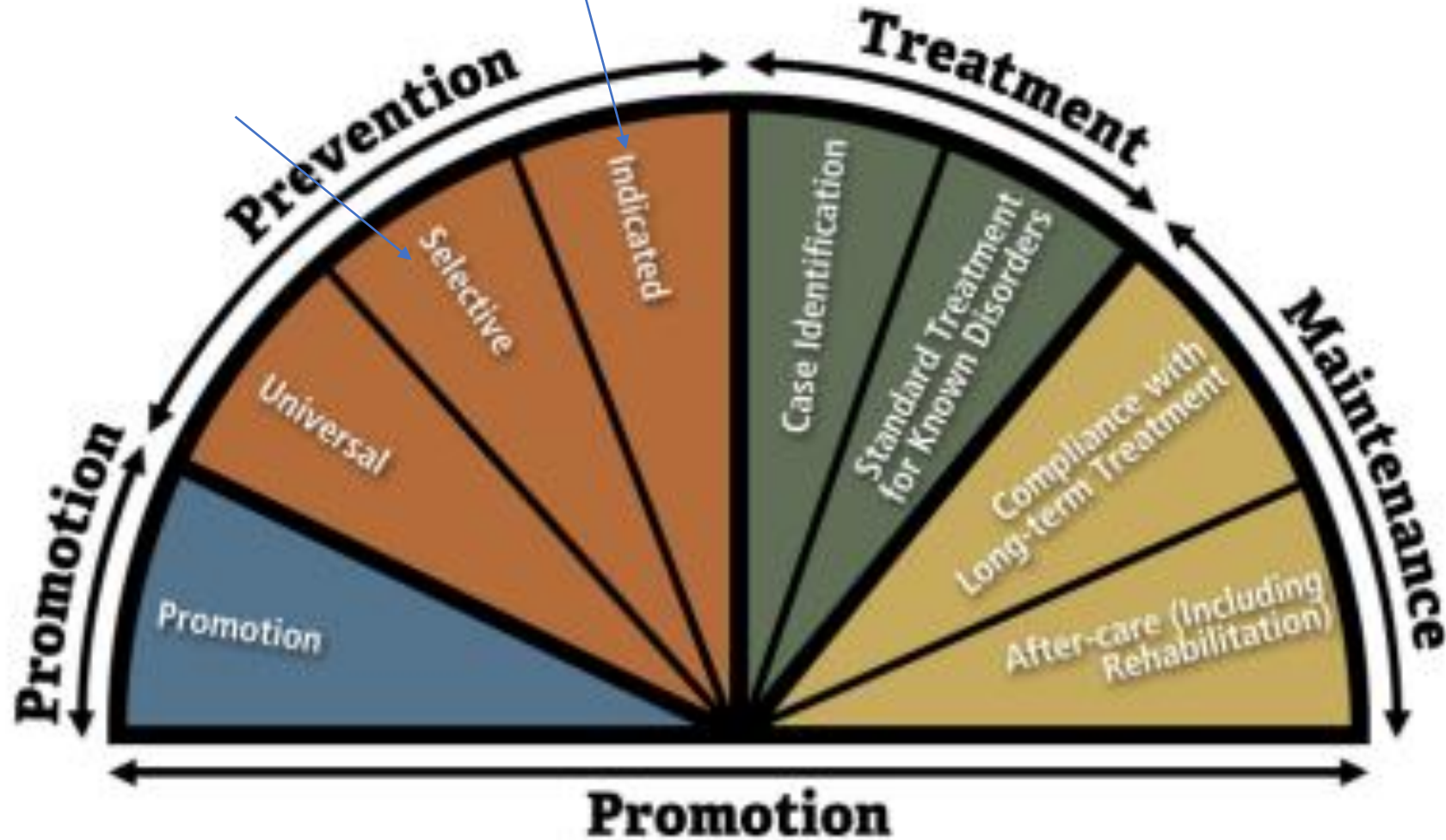


▶ CONSIDERATIONS

- What traditional, cultural and community-based societies exist to support your JHW Program and/or Court?
- What values, principles, sacred or natural laws exist that promote healing and wellness that could support your efforts?



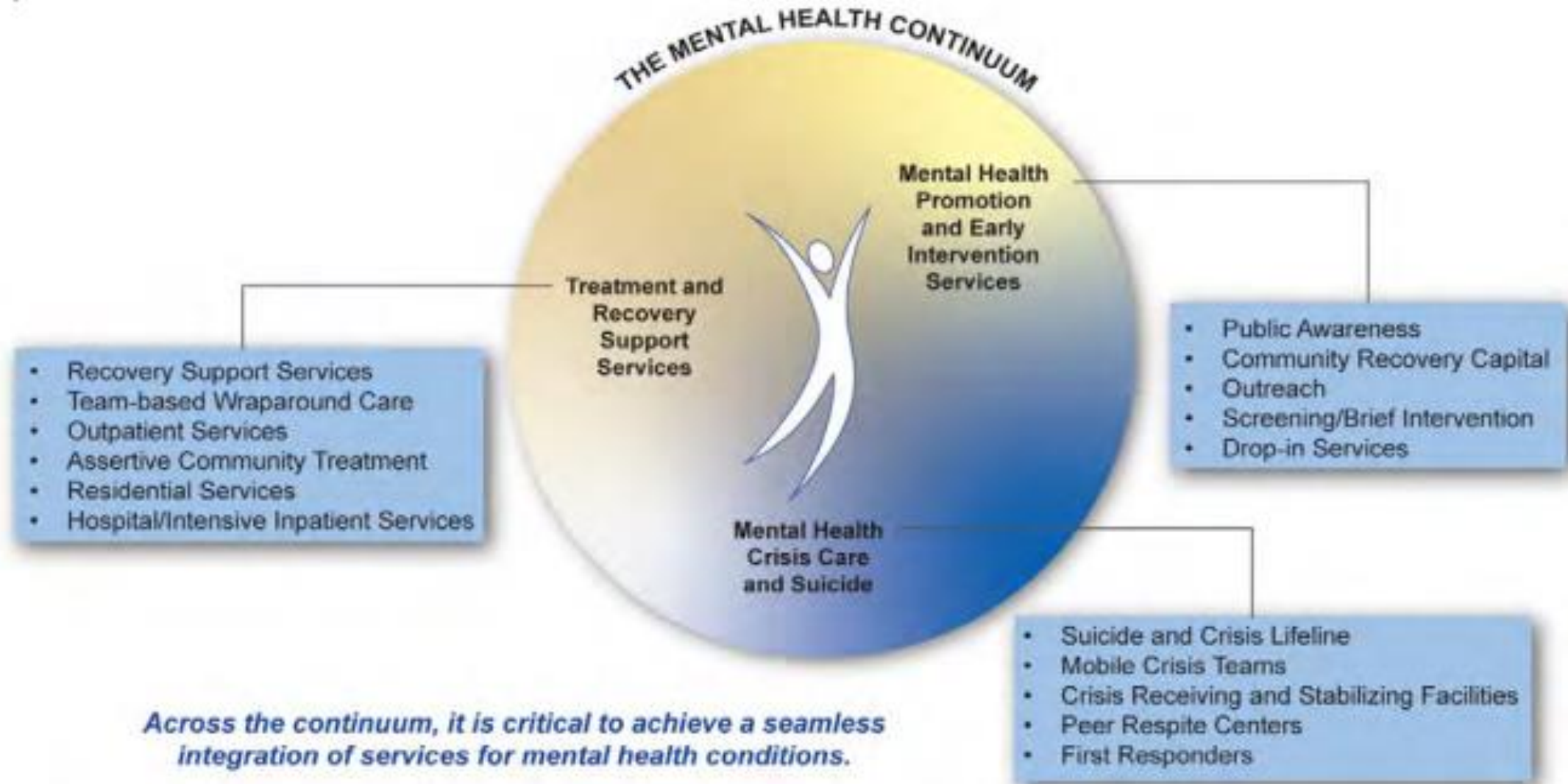
CONTINUUM OF CARE



**Institute of Medicine
Continuum of Care**



▶ CONTINUUM OF CARE (CONT.)



Mental Health Continuum

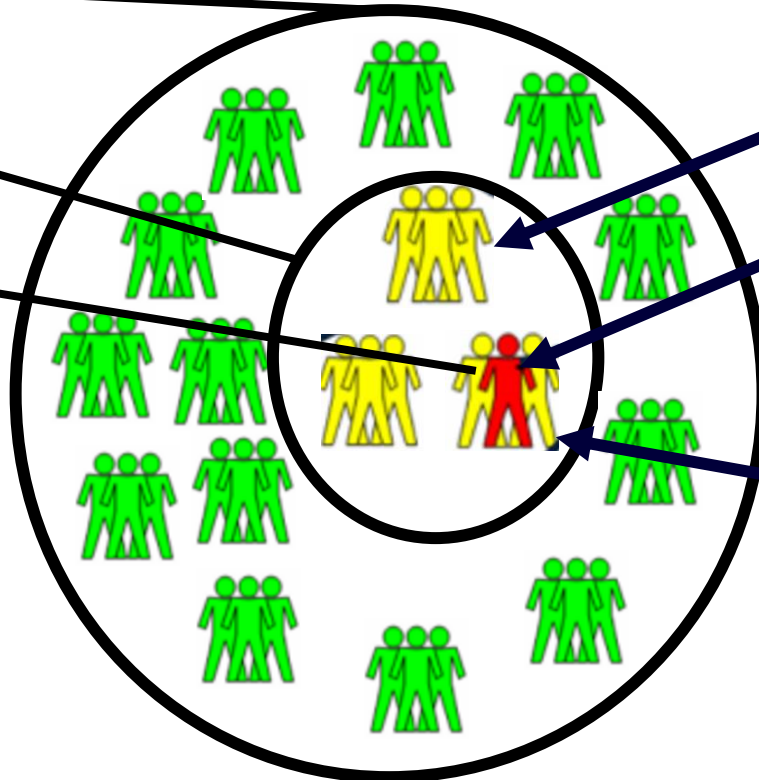
JHW PROGRAMS AND COURTS

Institute of Medicine Prevention Classifications

Universal Populations

Selective Subgroups

Indicated Individuals



JHW Programs

Selective programs or practices target individuals or groups who experience risk factors (and perhaps fewer protective factors) that put them at higher levels of risk for substance misuse than the broader population (SAMHSA, 2019)

JHW Courts

Indicated programs and practices identify individuals who exhibit early signs of substance misuse and/or associated problem behaviors with substance use and respond to them with special programs. (Center for Substance Abuse Prevention, 2019)

Level of Risk for Substance Abuse

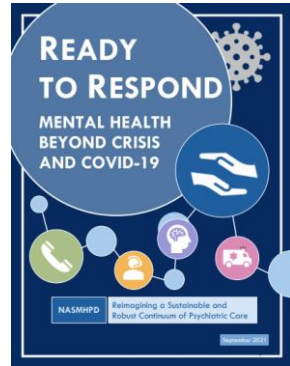


JHWC GUIDELINES, & RESOURCES



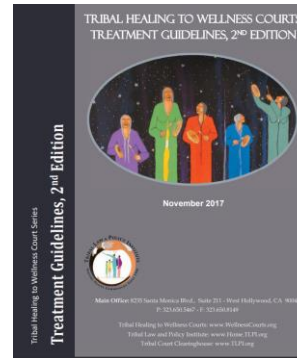
Opioid-Overdose Reduction Continuum of Care (ORCCA) Practice Guide 2023

[Opioid-Overdose Reduction Continuum of Care Approach \(ORCCA\) Practice Guide 2023 | SAMHSA](#)



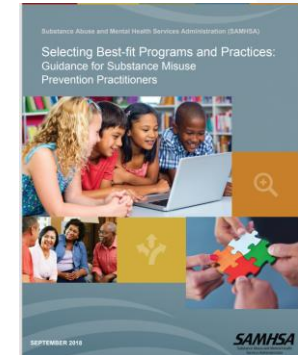
Ready to Respond Mental Health Beyond Crisis and COVID-19

[Reimagining a Sustainable and Robust Continuum of Psychiatric Care \(samhsa.gov\)](#)



Tribal Healing to Wellness Courts Treatment Guidelines 2nd Edition

[Tribal Healing to Wellness Courts](#)



Selecting Best-fit Programs and Practices: Guidance for Substance Misuse Prevention Practitioners

<https://www.samhsa.gov/sites/default/files/selectin-g-best-fit-programs-practices-guidance-substance-misuse.pdf>