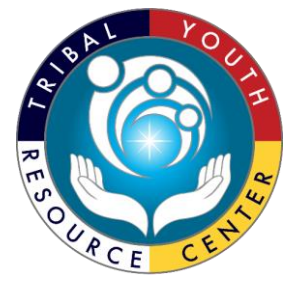




Data Collection



Tribal Youth Resource Center
www.TribalYouth.org

BEFORE WE BEGIN:

This project was supported by Grant 15PJDP-21-GK-04048-MUMU awarded by the Office of Juvenile Justice and Delinquency Prevention, Office of Justice Programs, U.S. Department of Justice. The opinions, findings, and conclusions or recommendations expressed in this publication/program/exhibition are those of the author(s) and do not necessarily reflect those of the Department of Justice.

▶ ASK
QUESTIONS
AND ASK
THEM
OFTEN!



© marketoonist.com

▶ INDIGENOUS DATA SOVEREIGNTY

The right of a nation to govern the collection, ownership, and application of its own data.

You get to determine what you collect, how you collect it, and what it is to be used for.



NCAI: THE STATE OF TRIBAL DATA CAPACITY IN INDIAN COUNTRY

Identified uses of tribal data on members:

- Complete grant or other required reporting (76%)
- Communicating with tribal members (69%)
- Service delivery (61%)
- Setting tribal priorities and strategic goals (60%)

Source: [http://www.ncai.org/policy-research-center/research-data/prc-publications/Tribal Data Capacity Survey FINAL 10 2018.pdf](http://www.ncai.org/policy-research-center/research-data/prc-publications/Tribal%20Data%20Capacity%20Survey%20FINAL%2010%202018.pdf)

▶ WHAT DO WE KNOW?

Needs and services have been identified

Applied for CTAS PA9 Seeding Change Grant

Engaging in planning process

Track for data-informed decision-making

▶ WHAT IS DATA?

Factual
Information

- Something that can be observed/measured
- Does not require additional analysis

Can be
quantitative

- # of students with improved grades/academic success
- # of youth participating in Talking Circles

...or qualitative

- Types of support services offered to youth
- Types of healing-informed resources offered

Can be analyzed to
draw conclusions

- Are we serving our intended population?
- Are youth receiving referral services?
- Have we identified service area gaps or additional service needed?



Data helps you develop & improve your program.

Data collection and analysis should be continuous.

**MAJOR
DATA
THEMES**

You don't need to be an expert—get your team involved

Data helps generate support from tribal leaders, as well as community and grant funders.

Data Management Goals

Enhance youth services

Make better-informed decisions

Promote collaboration

Support program growth and sustainability

Generate support for the program

STAGES OF DATA COLLECTION

1. Strategic Planning

- Pre-program implementation
- Local-level data
- Assists to develop program goals
- Illustrates what issues to prioritize
- Data sharing with other Tribal youth serving programs, Tribal leadership, OJJDP

2. Program Monitoring & Evaluation

- Real-time, consistent data collection
- Data points relevant to OJJDP Semi-Annual Reports
- Monitor program success & address areas for improvement
- Share data with OJJDP/funders/Tribal Council

DATA AS STORYTELLING

Before Story = Baseline Data

What does your community look like right now?

- Academic success rates
- # of youth-serving programs
- Youth substance use rates
- Diversity of services that align with youth needs
- Types of juvenile justice issues impacting youth, their families, and the community
- High School graduation rates

After Story = Comparison Data

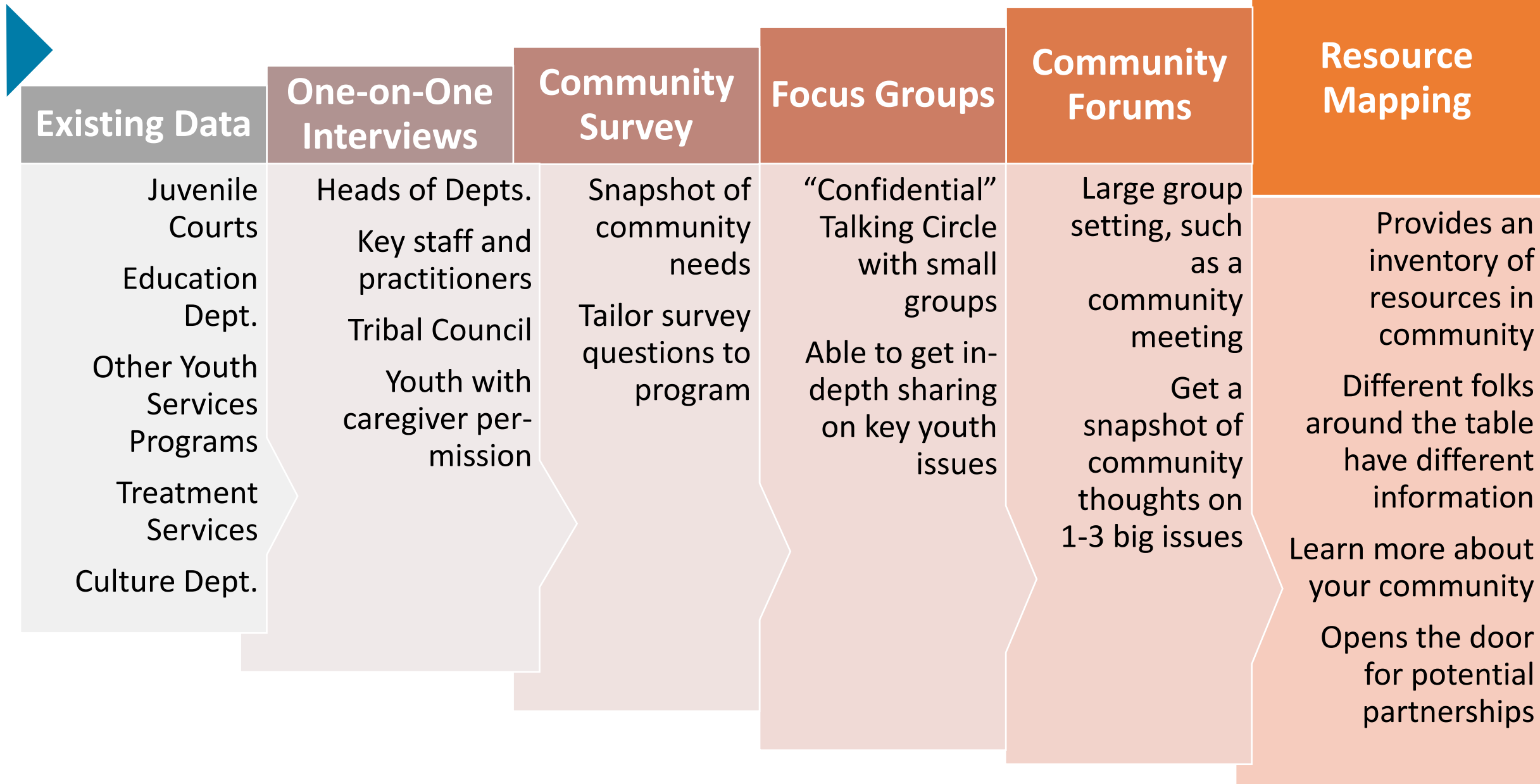
How is the Tribal Youth Program impacting the community?

- ← Same data points as before + new data points:
- Completion rates
 - Case loads / service population
 - OJJDP Semi-Annual Reports



Local-Level Data





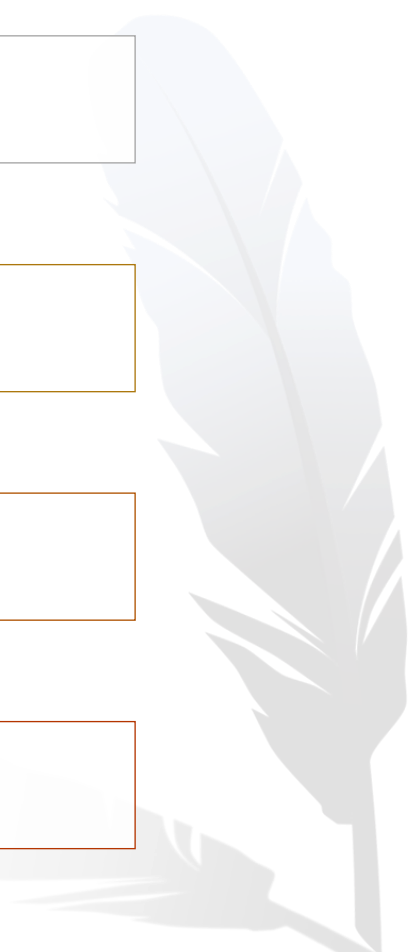
ONE-ON-ONE INTERVIEWS

Understanding the interview as data

Who will we interview and why?

Crafting effective interview questions

Interviewing skills



COMMUNITY SURVEY

Identifying your population

Drafting an effective survey

Administering a survey

Data Analysis

FOCUS GROUPS

Tribal
Leadership

Juvenile
Justice staff

Youth

Parents &
Caregivers

Social
services
and
behavioral
health
staff

▶ THE PRACTICALITIES OF FOCUS GROUPS

- ✓ Choosing appropriate groups
- ✓ Crafting effective questions
- ✓ Facilitation techniques
- ✓ Translating into data
- ✓ Confidentiality and consent issues

COMMUNITY FORUMS



- Location, location, location
- Identifying opportunities
- Drafting questions
- Facilitating & recording
- Analysis

▶ NOW WHAT?

How do you turn rough data into **key findings** to support the identified goals?

- Excel spreadsheets are your friend.
- Organize into **THEMES** or reoccurring issues:
Themes will be the issues that your **GOALS** will address.
- Capitalize on key resources and services identified in resource mapping to help develop objectives and activities.

DATA COLLECTION PLAN

Local-Level Data	Data to Collect	How will Data be Collected?	Timing Year/Quarter	Progress/Notes
Cultural Connectedness of Youth aged 12-18.	Cultural Connectedness Scale Items	Traditional Teachings Equine-Assisted Learning Program Pre/Post test with court appointed youth aged 12-18.	Annual	Assessment tool has been shared and discussed with Community Advisory Committee. (cultural appropriateness)
		Youth GONA Pre/Post Test with youth aged 12-18.	Annual	Data security plan training completed. (How do we keep data confidential and safe? Who is responsible?)
Percentage of Youth who engage in program who reside with someone other than a biological parent.	Demographic Information/ Parent Caregiver Engagement/ Custodial Information	Consent to participate will include questions regarding demographic information	Ongoing/ Continuous	Consent to Participate includes appropriate questions: Example: Are you the biological parent the youth participant? (Yes/No) Are you an appointed custodian of the participant? (Yes/No)

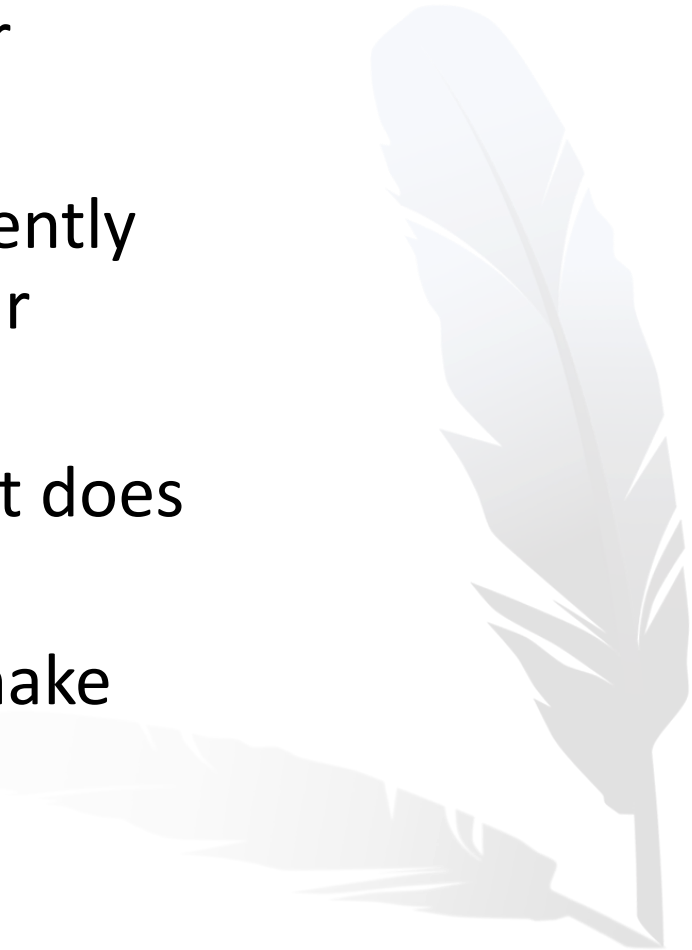
PERFORMANCE MEASURES

Performance measurement is a system of tracking progress of chosen activities in accomplishing specific goals, objectives, and outcomes:

- Is directly related to program goals and objectives
- Measures progress of the activities quantitatively
- Is not exhaustive
- Provides a temperature reading—gives quick and reliable gauge of selected results

DISCUSSION: KEY QUESTIONS

- What information do we need in order to know if our program is having the effect we desire?
- What information does the Tribal Youth Program currently have access to that would help us assess the effect our program is having?
- What information would we like to have access to that does not currently exist?
- Who can help us find or create the data we need to make good decisions for our program and youth?





QUESTIONS?





**TRIBAL YOUTH
RESOURCE CENTER**

www.TribalYouth.org

THANK YOU!

