



# A Vision for the Future

Sustainability Planning in the  
Juvenile Healing to Wellness  
Court

October 27, 2022



**Tribal Youth Resource Center**  
[www.TribalYouth.org](http://www.TribalYouth.org)

# ▶ WELLNESS COURT TRAINING AND TECHNICAL ASSISTANCE CORE PLANNING TEAM



Jacob Metoxen  
Training and Technical  
Assistance Manager



Chaniel Grant, Blackfeet  
Wellness Courts, Consultant



Dave McArthur  
White Earth  
Wellness Courts,  
Consultant

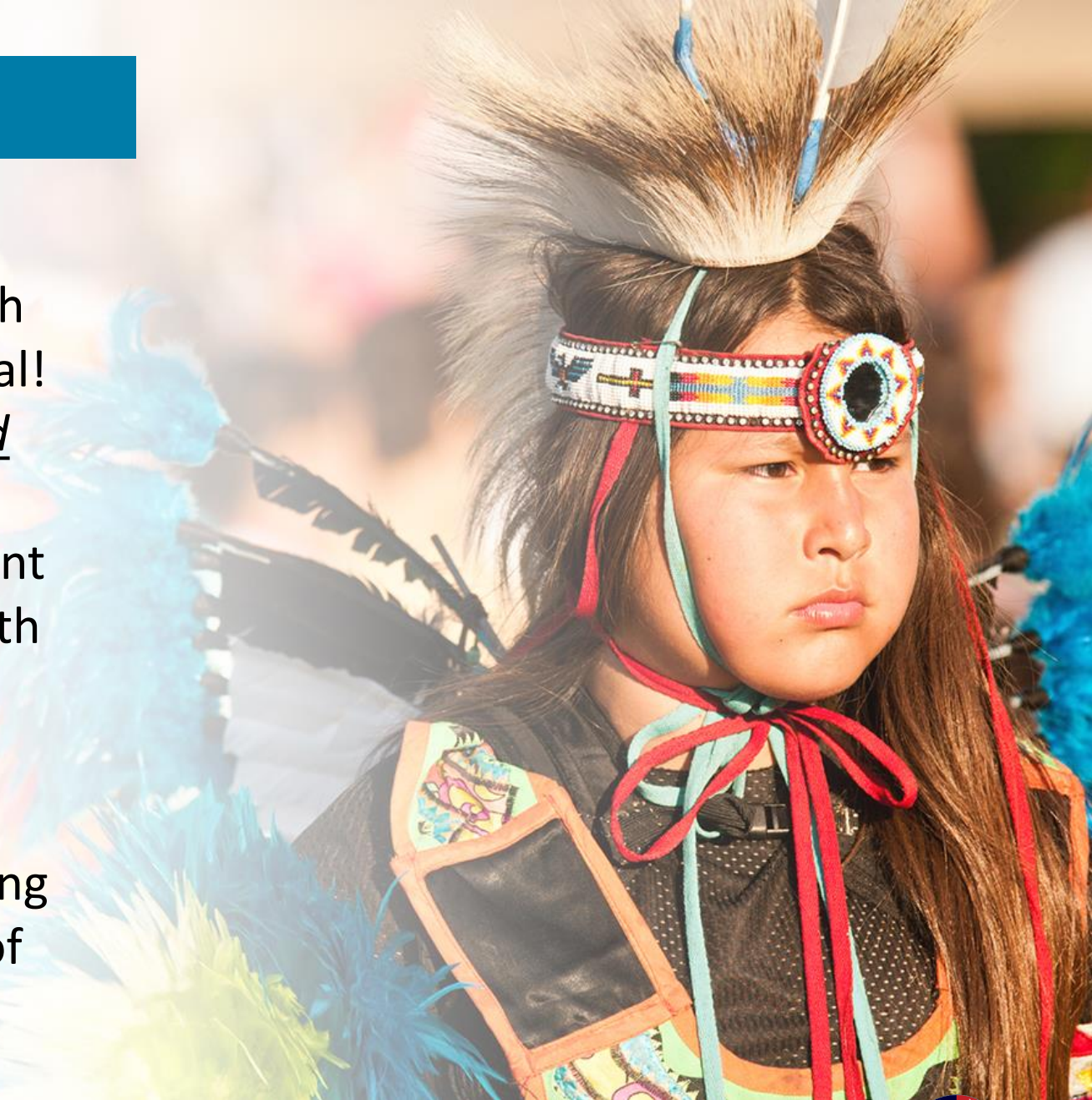


## ▶ Our Time Together Today

- Discuss sustainability planning as an early and ongoing activity within the project.
- Consider some helpful sustainability tools.
- Consider methods and approaches taken by communities to embed the Juvenile Healing to Wellness Court in long-term court operations.

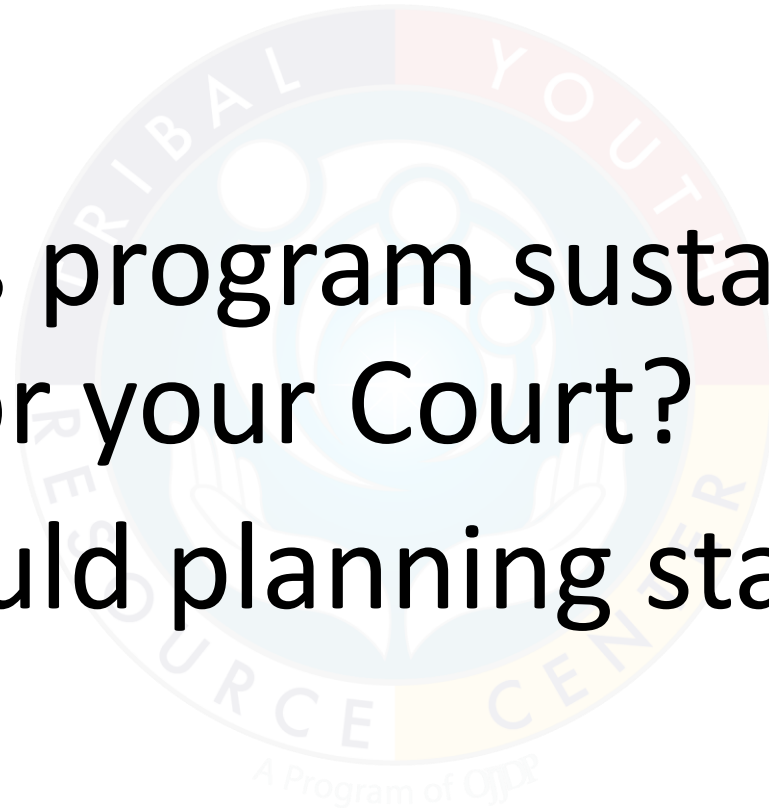
## ▶ Preparing for Sustainability

- ❖ Traditionally In Native communities each season brings many new tasks- most of which are focused on preparation for winter survival! *Sustainability is inherent to Tribal people and communities.*
- ❖ Today, many communities are heavily reliant on federal funding to meet the needs of youth and families. As a result, many equate sustainability with securing continuation of funding for services.
- ❖ A broader view of sustainability entails using various strategies to maintain the activities of the program.



# ▶ SUSTAINABILITY

- What does program sustainability look like for your Court?
- When should planning start?



# ▶ SUSTAINABILITY

- Plain terms:
  - Continuation of program services
- Can also be:
  - Institutionalization of the program
- Adapting to change and continuing aspects of the program.
- Creating a Legacy.

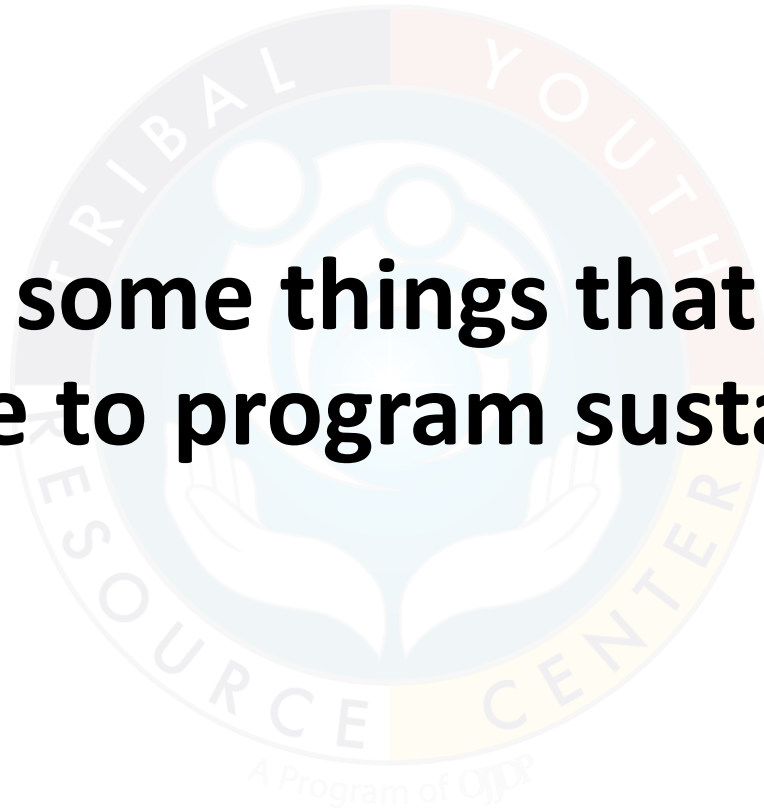
# ▶ SUSTAINABILITY

- Example:
  - Absentee Shawnee Tribe, Oklahoma- Camp Nikoti has run for 20+ years.
  - Camp has persisted even through staffing changes, transition of community members, and even a world pandemic.
  - ***“Hopefully, they will see how much their tribe cares for their health and well-being by offering this camp for twenty summers.”*** (Tresha Spoon, AST Education Director)
  - Do you know of other youth program examples?



# ▶ SUSTAINABILITY

**What are some things that you think contribute to program sustainability?**





# SUSTAINABILITY PLANNING

## ❖ Who should be involved?

- ❖ Sustainability Working Group: Identify key tribal administrators and experienced direct service providers, cultural advisors and community members.

## ❖ Responsibilities

- ❖ Members may be a part of the advisory group or smaller sub working group.
- ❖ *Be able to attend regular meetings, (Quarterly meetings throughout the life of the project)*
- ❖ Have a willingness to collaborate and recognize/support continuity of program services
- ❖ May already be involved with the program.

# ▶ WHO ELSE SHOULD BE INVOLVED?

***Youth! The next generation is here now to participate fully in planning for program sustainability.***

- *Encourage peer leaders through returning to teach through speaking, employment or role modeling.*
- *Participate in meetings, planning activities and on-boards*
- *Youth need to have buy-in to the program and contribute to the “word of mouth” about program benefits. (Graduates/Others)*



# ▶ FREE SUSTAINABILITY TOOLS

## Sustainability Tool 1- The Program Sustainability Tool

- <https://sustaintool.org/>
- A free program sustainability tool that can assist your team as you plan for the future.
- The Program Sustainability Assessment Tool is a 40 item self-assessment that program staff and stakeholders can take to evaluate the sustainability capacity of a program. It defines sustainability capacity as the ability to maintain programming and its benefits over time. When you take the assessment online you will receive an automated summary report of your overall sustainability. You can use these results to engage in sustainability planning.



# SUSTAINABILITY APPROACHES:

- ❖ ***Community Outreach, Education, and Buy-In***
  - ❖ *Build awareness of the program and highlight the benefit of program services.*
  - ❖ *Engage leadership and others related to the ongoing need or benefit of the program's service.*
  - ❖ *Dedicate staff time to ensure that community outreach is a part of the program's general operations and services.*

## NEXT STEPS: MOVEMENT FORWARD

- Review the Sustainability Planning component of the of the FY21 CTAS PA8 Strat Pak.
- Review available tools and ensure early planning for sustainability as part of your overall project planning, development, and program implementation.
- Contact your TYRC TTA Specialist for assistance with sustainability planning resources.

## DISCUSSION/QUESTIONS

---

Advice for grantees?



# Closing



**Tribal Youth Resource Center**  
[www.TribalYouth.org](http://www.TribalYouth.org)



# Reach Out


Tribal Youth Resource Center

[www.TribalYouth.org](http://www.TribalYouth.org)

8235 Santa Monica Blvd., Suite 211  
West Hollywood, CA 90046  
(323)650-5467 ~ fax: (323)650-8149







*This project was supported by Grant #15PJDP-21-GK-04048-MUMU awarded by the Office of Juvenile Justice and Delinquency Prevention, Office of Justice Programs, U.S. Department of Justice.*

*The opinions, findings, and conclusions or recommendations expressed in this publication/program/exhibition are those of the author(s) and do not necessarily reflect those of the Department of Justice.*